

Welcome to Shizuoka! Home of Mt. Fuji



**LOCAL
TRAVEL**
PARTNERS

Local Travel Partners, Inc. www.shizuoka-tour.com
localtravelpartners@gmail.com

About our company



**LOCAL
TRAVEL**
PARTNERS

Company Name: Local Travel Partners, Inc.

A travel agency registered with the Shizuoka Governor

Founded : June 2015

Office: 3F, 2-1-10, Oguro, Suruga-ku, Shizuoka City

Services: Tailor-made arrangements for FIT especially in the Shizuoka area, Hybrid bike tours in Shizuoka, Green tea farm visiting experience, Farmers house stay, Private Shore Excursions and transportation for cruise ship passengers /Shimizu, Yokohama, Kobe, Osaka, Kochi, Fukuoka, Kanazawa, Hososhima, Aomori), Rental car arrangement(adding map codes), all land arrangements

URL: www.shizuoka-tour.com

Our reliable partners



Robert

Guide: French, English, Japanese
He is from France, living in Shizuoka over 40 years. Has much knowledge about Japanese tea, sake, wasabi, culture.



Elliot

Native English speaking driver / guide
He is from the U.K. He speaks English and perfect Japanese. Recently moved from Tokyo. He is becoming very popular.



Hiroko

A veteran English speaking guide
She has much knowledge about Shizuoka, green tea, culture.
Representative of NPO for training English guides



Kiyono

A young English speaking guide. She has grown up in Shizuoka and has much acquired knowledge about Shizuoka. Our past guests often recommend her guide to their friends.

Our reliable partners



Terry

A veteran English speaking driver-guide. He had lived in the U.S for 19 years. He speaks fluent English and has much knowledge about Shizuoka. He understands what guests are wishing.



Tetsuya

A veteran English speaking driver-guide He is the most popular taxi driver for overseas travelers in Shizuoka. We have received many great review on trip advisor.



Hito

A veteran English speaking driver-guide He had lived in the U.S and worked for several years. He speaks fluent English and has much knowledge about Shizuoka.



Michiko

A young English speaking guide. She is a very bright and kind lady. She is working at a tourists information in Izu peninsura. So she has much knowledge about Shizuoka prefecture.

Access from mega cities



Convenient Transportation, Good Access

JR Hikari super express, Tomei express way, Shin Tomei Express way, Fujisan Shizuoka Airport,
The most accessible countryside from each mega cities.

Local Travel Partners, Inc. www.shizuoka-tour.com

localtravelpartners@gmail.com

Shizuoka & Mt.Fuji area



North: Mt. Fuji area: Fuji 5 lakes, Shiraito Falls, Mt.Fuji World Heritage Center, farmers house stay near Mt.Fuji
South: Shimoda, Kawazu cherry blossom, Shuzenji Onsen,
Central: Nihondaira, Kunozan Toshogu Shrine, Miho Pine Tree Grove, Green tea farms, Oigawa railway steam locomotive, farmers house stay, Sumatakyo gorge,

Local Travel Partners, Inc. www.shizuoka-tour.com

localtravelpartners@gmail.com

History & People



People have been living there since the stone age.

(Toro Ruins in Shizuoka City)
Sea, river, flat land and mild climate made it easy to live and suitable for rice cultivation.



Originally 3 counties

- West: "Totoumi no Kuni"
 - Central : "Suruga no Kuni" (Suruga Bay came from this name)
 - East: "Izu no Kuni" (Izu Peninsula came from this name.)
- 1876, became Shizuoka Prefecture



Shogun "Tokugawa Ieyasu"

was a lord who initiated a peaceful Edo period that lasted 260 years.
He first lived in Shizuoka as a hostage .(8 - 19 years old.) After giving up the Shogun's title to his son in Edo (Tokyo), he moved to Sumpu Castle / Shizuoka where he lived from the age of 64 until his death in 1616.. His grave is inside the Kunozan Toshogu Shrine in Shizuoka.



The best Carpenters

were gathered from across the country for the construction of Sumpu Castle by Ieyasu. Accordingly the manufacturing industry greatly developed in Shizuoka. (plastic models, Japanese dolls, shoes, cars, motorbikes, musical instruments.)

Local Travel Partners, Inc. www.shizuoka-tour.com

localtravelpartners@gmail.com

Culture & People



Soichiro Honda

A car manufacturer, founder of **Honda Co.** with Ayrton Senna He started his company by making engines for bikes in 1948./ Hamamatsu City.



YAMAHA Corporation

YAMAHA is the top piano producer in the world.
Founder: Torakusu Yamaha (1851-1916) Hamamatsu City



Shizuoka, Kingdom of football/soccer

Shizuoka Prefecture is the birthplace of football/soccer in Japan and counts no less than 4 professional clubs in J1 League and J3 League!



Shizuoka, Top Green Tea producer.

40% of tea planting area and 40% of harvest volume in Japan. One of the images of Shizuoka(green tea, Mt.Fuji)

Local Travel Partners, Inc. www.shizuoka-tour.com

localtravelpartners@gmail.com

1 Mt.Fuji Area / Fujinomiya City



Lake Tanuki

- Off the beaten tracks
 - Leisurely time
 - Mt.Fuji photo spot
 - Popular with cruise ship passengers
- (guests from the U.K)



Shiraito Falls

Ranked as the most beautiful waterfalls in Japan. A Part of Mt.Fuji World Heritage Site
(guests from the Netherlands)



Fujisan Hongu Sengen Shrine

- Built to protect Mt.Fuji from eruptions in 806.
 - Part of Mt.Fuji World Heritage
- A majestic and beautiful shrine.



Fujisan Hongu Sengen Shrine

- Wakutama Pond
- Mt.Fuji's beautiful ground water



Mt.Fuji World Heritage Center

Opened Dec. 2017
Next to Fujisan Hongu Sengen Shrine.

Mt. Fuji climbing simulation
Exhibition.
Outdoor Terrace.



Omiya Yokocho Alley

Popular local food shop area very close to Fujisan Hongu Sengen Shrine (guests from the U.K)



Yamataka Sakurai tea farm

Green Tea Farm visiting, Tea Picking. Tasting several kinds of tea at the farmers house, Mt.Fuji view



Fuji Takasago Sake Brewery

Over 180 years history. A small brewery, Accepting sake brewery tours. Very close to Fujisan Hongu Sengen Shrine



Mt.Fuji 5th level, Fujinomiya trail

Access: by car

1 hour round trip walking to the 6th level is easy and recommended.



Paraglider at Asagiri Plateau

Access: by car

Tandem flight with the instructor is recommended. (About 10 minutes flight)



Rafting & B.B.Q at Fujikawa River, Fuji City

Access: by JR Train

From JR Shizuoka Station

Only 30 minutes

We will pick you up and drop you off at the station

Highly recommended activity especially in summer season

(guests from France)



2 Shizuoka Area



Miho Pine Tree Grove

A part of Mt.Fuji World Heritage Site

Blue sea, Green Pine Trees, Wide sand Beach and beautiful Mt.Fuji view



Nihondaira Plateau

307 meters above sea level. Designated as one of the Japan's most scenic spots. Green tea fields, Suruga Bay, Izu Peninsula, Southern Alps,



Nihondaira Yume Terrace

is a very popular observation spot which was built in 2018.(you can enjoy beautiful panoramic view, Mt.Fuji view café is on the second floor)



Green tea fields

At Nihondaira Plateau. You can also enjoy this view. "Tea picking experience". April–October (guests from the U.K)



Nihondaira Ropeway

Connecting Nihondaira Plateau & Kunozan

Toshogu Shrine (5minutes for oneway, round trip is common)



Kunozan Toshogu Shrine

A National Treasure

Historical and impressive shrine

Mausoleum of Ieyasu

Tokugawa (1543-1616, the 1st Tokugawa Shogun)

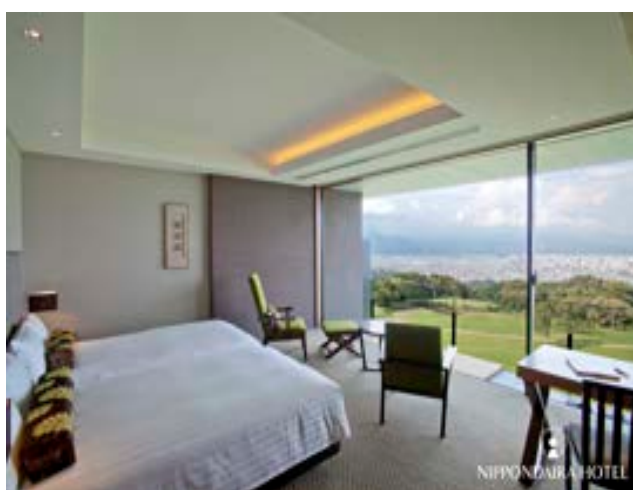
[No.1 spot on Trip Advisor's ranking in Shizuoka City](#)

Access: ropeway from Nihondaira Plateau or climb up 1,159 steps from the foot of this mountain. (guests from the U.S)

How to spend at Nihondaira & Kunozan Toshogu Shrine?

1, arrive Nihondaira station, take a ropeway to the shrine
2, ① the shrine, ② the mausoleum, ③ the museum
3, back to Nihondaira by a ropeway, visit ① Yume terrace observatory, ② Nihondaira Ocha Kaikan (green tea field), ③ the best view spot (road side where you can view green tea farm, Suruga Bay and Mt. Fuji. The second photo on the previous slide) Total 90 minutes stay is recommended. By staying at Nippondaira Hotel (the highest level hotel in Shizuoka City), clients can enjoy this spot without worrying about time. (means chartered taxi time)

Nippondaira Hotel in Shizuoka City



**The highest quality hotel in Shizuoka City
Dinner (Japanese, Sushi-Kaiseki, Western)
By staying this hotel, you can visit Nihondaira & Kunozan Toshogu Shrine by yourselves on foot or shuttle service**



Shimizu Fish Market

Shimizu port boasts Japan's biggest catch of tuna.

There are many seafood restaurants and sushi shops. Very popular market among both locals and tourists.

From this market, you can take a water bus to Miho Port or Hinode Pier (a large shopping center, S-pulse Dream Plaza)



Tokaido Hiroshige Museum of art

Ukiyo-e (Japanese wood block prints) Museum

You can discover famous ukiyo-e artist Utagawa Hiroshige's works. Also can enjoy ukiyo-e painting experience (very popular) (guests from France)





Chojiya Restaurant

(since 1596)

The most historic restaurant in Shizuoka prefecture.

A famous ukiyo-e artist Hiroshige UTAGAWA drew this restaurant.

The shape has not changed since then.

Ancient travelers enjoyed Tororojiru (Yam soup) as well as us.



Yashima Suisan Company

(tuna freezing room seeing)

Shimizu Port boasts

Japan's biggest catch of tuna.

They accept factory visiting (for small groups)

After visiting this factory, guests can visit Shimizu Fish Market (very close)

We can arrange both activities with English speaking guide or French speaking guide.





Sumpu Castle Park

Located on the former site of Sumpu Castle where the first Shogun of Tokugawa Shogunate lived in retirement. Beautiful traditional Japanese garden inside.



Shizuoka Sengen shrine

Located near Sumpu Castle Park (the central of Shizuoka City). More than 2,000 years history. Actually made up of 7 shrines (shrines for business, art, successful exams. etc.



Toro Ruins

The Yayoi period (dated 300 BC – 300 AD) lasted for around 600 years : it started in the Bronze age and crossed towards its end the Iron age. It is at that time that people transitioned to a settled agricultural society. Toro ruins is the first archaeological site excavated in Japan in which remaining of the Yayoi era wet-rice fields were found.





Oigawa Railway Steam Locomotive and Abt Train to Sumatakyo area

Steam Locomotive runs every day. Guests can have bento lunch on this train.

Small abt train runs on steep slopes. Abt system is the technology of Switzerland.

It go through “the station on a lake”, large Nagashima dam, in a beautiful scenery.

We are providing a special arrangement to ride both of them and stay at Sumatakyo area.



Okuoikojo Station Sumatakyo Valley

This station is one of the most popular photo spots in this area. Guests can enjoy the scenery twice.

1. from abt train
2. From above place (taxi)



“Yume no Tsuribashi” suspension bridge at Sumatakyo Valley. Guests can stay at traditional onsen (hot spring spa)ryokan



A small tea farm & their traditional house

Visit of a green tea farm and tea factory, tasting various kinds of tea, and short lecture at their old house (over 150 years old). (by car or by our rental hybrid bikes)(guests from France and the Netherlands)



Another tea farm/ tea picking, cooking tempura, tea presenting with photo Visit of a green tea farm, tea factory, and tasting various kinds of tea. They make tempura with tea leaves and serve it to guests.(tea leaves picked by the guests) (guests from the U.S)

3 Numazu, Izu Peninsula Area



Numazu Fish Port

- very popular place for Japanese tourists
- local sea food alley
- sushi restaurants
- seafoods bowl
- various dried fish
- Numazu Deep blue Aquarium



West part of Izu

- Dogashima cruise
- Beautiful Mt.Fuji view
- Beautiful sunset
- Suruga Bay Ferry from West Izu to Shimizu (only 65 minutes)





Shuzenji Area

Central part of Izu Peninsula

- Beautiful autumn leaves
- Traditional Japanese atmosphere
- Onsen(Hot spring spa)



Kawazu Area

East part of Izu Peninsula

- Kawazu Zakura Festival (Feb to March) Cherry blossoms of early bloom



Kawazu 7 waterfalls

- There are 7 waterfalls in Kawazu Area.
- Kawabata Yasunari “The Izu Dancer”
- Very good place to explore



Atami Plum Garden

East part of Izu Peninsula

- Plum of earliest bloom Plum Festival from 5th January to 3rd March



Izu panorama park

North part of Izu

- spectacular Mt. Fuji view from cableway (runs for 1,800m, 7 minutes, summit 452m)
- Sky garden café viewing Mt. Fuji and Suruga Bay
- delicious buffet restaurant



Shimoda Tokyu Hotel

South part of Izu

- popular among western people
- resort pool and private beach
- Delicious meal of Japanese and Western cuisine



Shimoda Shirahama Beach

South part of Izu

- White sand beach
- surfing, sea bathing,
- the largest beach in Izu area
- luxury accommodations



What we can offer

Private tour (van taxi, sedan taxi, bus)
(English speaking guide, French speaking guide)



van taxi, capacity 8 people
+ a guide



mini bus with a guide
Gay cruise guests



A native English speaking
driver / guide) from the U.K



An English speaking driver
with high hospitality

Small Green tea farm Experience / by bike or by car



Tasting of several kinds of tea
 Different type of tea made from the same tea leaves
 Or tasting of several kinds of Sencha made from different tea leaves

Large Green tea farm Experience / by car



Tea picking, factory tour, tasting several kinds of tea with Japanese confectionary, Enjoy tempura of tea leaves which they picked, souvenir of tea (their photo is printed), Available for both small groups and large groups,

Mt.Fuji view & Countryside bike tour
(seaside, fishing port, traditional fishermen town,
riverside, historical area,) 4 hrs



Price: 12,000 JPY/person (from 2-6 people)

Rafting & B.B.Q at Fujikawa River



Rafting & B.B.Q at Fujikawa River, Fuji City

Easy Access: by JR Train from JR Shizuoka Station

Only 30 minutes

Car picking up and drop off service is available

Highly recommended activity especially in summer season

(age: Now they accept over 6 years old participants only.)

8:30 Meeting, rafting, 12:30-15:00 B.B.Q

or 13:00 Meeting, rafting, 17:00-19:30

Season: from April to October

Price: adult 12,000 JPY/person,

6 years old to 15 years old 11,000 JPY/person

Mt. Fuji view from the river and on the way to the starting point
(depends on the weather)

Steam Locomotive trip & Farmers house stay
Tea lecture, cooking dinner, suspension bridge



Farmers house stay in Kakegawa City



Pick up & drop off at JR Kakegawa Station, Green tea farm, Ukiyo-e museum, farmers house stay, dinner & breakfast, 14,000 JPY~/ person, (price is fluid.)

visiting Dream suspension bridge, Okuoi-Kojo Station by Steam locomotive, Abt train, taxi, stay at an onsen ryokan



Steam Locomotive & Abt Train of Oigawa Railway

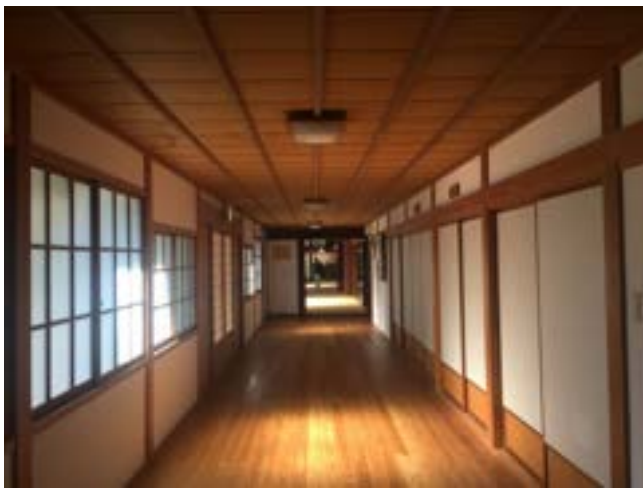


Okuoi kojo Station (=Station on the lake) by abt train



Yume no Tsuribashi suspension bridge at Sumatakyo

Temple stay, monk's vegetarian meal, zazen, shakyo



Kasuisai Temple in Fukuroi City, easy access from JR Station, 2 days 1 night program, (dinner, breakfast, zazen, shakyo)
15:00 check in, 9:00 check out, 12,000 JPY/person

Arrangements Example

Day trip from Tokyo (by bullet train, JR pass users)

2 days, 1 night trip

3 days, 2 nights trip

Day trip from Tokyo

1. Guided bike tour to a green tea farm
2. Mt.Fuji view & countryside bike tour
3. Tour with an English speaking driver/ Shizuoka (4 hrs)
3. Tour with an English speaking driver/Fujinomiya (6 hrs)
4. Tea fields and Wasabi fields visiting with a guide
5. Rafting & B.B.Q at Fujikawa River

2 days, 1 night

- Choose two options in above programs.

3 days, 2 nights

2 days, 1 night program + ①farmers house stay, ②steam locomotive trip to countryside and stay at onsen ryokan (hot spring traditional inn) or ③overnight at local seaside cottage (traditional Japanese style), ④Temple stay (Zazen, monks vegetarian meal, Shakyos experience)

The best of Shizuoka 4hrs



City	Time	Transport	Place
Shizuoka	13:00	Van taxi or sedan taxi	JR Shizuoka Station Pick up
Shizuoka	13:30-15:00		Nihondaira Plateau, Ropeway, New observatory, Kunozan Toshogu Shrine (a national treasure)
Shizuoka	15:20-16:10		Miho Pine Tree Grove (Mt.Fuji World Heritage)
Shizuoka	16:50		Back to JR Shizuoka Station (✕non included: admission)

Number of participants	Price/vehicle	Car Type
Up to 4 people English speaking driver	32,000 JPY +ticket @1,750 JPY	Sedan taxi
Up to 8, English /or French speaking guide/the U.K driver	70,000 JPY + ticket@1,750 JPY	Van Taxi

Green Tea farm & Shrine, 4.5 hrs



City	Time	Traffic	Place
Shizuoka	13:00	Van taxi or sedan taxi	JR Shizuoka Station Pick up or hotel pick up after check in
Shizuoka	13:30-15:00		A local green tea farm (tea picking, lecture & several kinds of tea tasting)
Shizuoka	15:30-16:10		Sumpu Castle Park
Shizuoka	16:20-17:10		Shizuoka Sengen Shrine (7 shrines in their land)
	17:30		Back to JR Shizuoka Station or hotel

Number of participants	Price/vehicle	Car Type
Up to 4 people English speaking driver	36,000 JPY + tea farm fee	Sedan taxi
Up to 8 English/or French speaking guide/the U.K driver	78,000 JPY + tea farm fee	Van Taxi

Miho pine Tree Grove and Ukiyo-e Museum, 4hrs



City	Time	Transport	Place
Shizuoka	13:00	Van taxi or sedan taxi	JR Shizuoka Station or hotel Pick up
Shizuoka	13:40-14:30		Miho Pine Tree Grove (Mt.Fuji World Heritage)
Shizuoka	15:10-16:10		Tokaido Hiroshige Museum of Art (Very rare ukiyo-e museum) Japanese woodblock prints experience
Shizuoka	17:00		Back to JR Shizuoka Station or hotel

Number of participants	Price/vehicle	Car Type
Up to 4 people English speaking driver	32,000 JPY +museum fee	Sedan taxi
Up to 8 English/or French speaking guide/ the U.K driver	70,000 JPY + museum fee	Van Taxi

Best of Mout. Fuji area 6.0 hrs



City	Time	Traffic	Place
Shizuoka	09:00	Van taxi or sedan taxi	JR Shizuoka Station or hotel or hotel Pick up
Fujinomiya	10:20-11:00		Lake Tanuki "Double Diamond Fuji" Photo Spot
Fujinomiya	11:20-12:10		Shiraito & Otodome Falls Mt.Fuji World Heritage
Fujinomiya	12:40-14:00		Fujisan Hongu Sengen Shrine (Mt.Fuji World Heritage) Lunch at Omiya Yokocho Alley
Shizuoka	15:00		Back to JR Shizuoka Station

Number of participants	Price/vehicle	Car Type
Capacity: 4 people English speaking driver	54,000JPY + museum fee	regular taxi
Capacity: 8 With English/ or French speaking guide	100,000 JPY + museum fee	Jumbo Taxi

Local Travel Partners, Inc. www.shizuoka-tour.com

For Mt.Fuji climbers in summer

- ①The best Onsen ryokan 2 nights (before climbing, after climbing),
- ②1 night at a mountain hut on Mt.Fuji 8th station,
- ③shuttle bus service between the JR Mishima Station (Shinkansen Station) and the hotel
- ④shuttle bus service between the hotel and Fujisan Station



For Mt.Fuji climbers in summer

Highly recommended itinerary, relaxing time at the high grade onsen ryokan, very good meal, Japanese taiko (drum) show every night, convenient transportation, include 1 night at mountain hut at the 8th station of Mt.Fuji (dinner, bento breakfast), available to head to Shizuoka via Fuji 5 Lakes instead of returning to JR Mishima Station.

City	Time	Traffic	Place
Mishimama City	12:45	Shinkansen	JR Mishima Station, shuttle bus service by the hotel,
Lake Yamanaka	15:15	Shuttle bus	Arrive at the hotel via 1 sightseeing spot, check in, dinner , overnight,
Fujisan Station	10:40 11:00	Shuttle bus Bus to Mt.Fuji	Leave luggage at the hotel. Shuttle bus take clients to Fujisan Station, transfer to another bus head to Mt.Fuji 5 th station of Yoshida trail
Mt.Fuji 5 th station	11:00	walk	Get off the bus, start climbing to the 8 th station
Mt.Fuji 8 th station	15:00		Arrive at a mountaion hut, dinner, take a rest at the mountain hut
The top of the Mt.Fuji	24:00 04:00	walk	Bring bento and Head to the top of Mt.Fuj in midnight. Enjoy the sunrise from the top
		walk	Walk down to the 5 th station
5 th station		bus	Take a bus to Fujisan Station
			Arrive at Fujisan Station, transfer to shuttle bus or a taxi to back to the hotel
			One more night at the hotel
	09:30 12:00	Shuttle bus	Check out, head to JR Mishima Station by a shuttle bus service via 1 sightseeing spot, arrive at Mishima Or head to Shizuoka by a chartered taxi via Fuji Five Lakes, Shiraito Falls, Fujisan Hongu Sengen Shrine.

Steam Locomotive, Abt train and Sumatakyo Gorge Onsen 1 night



City	Time	Transport	Place
Shizuoka	10:00	train	From JR Shizuoka Station to Oigawa railway Shinkanaya Station
Kawane Honcho	11:52-13:09	Locomotive	Steam Locomotive Trip to Senzu Bento lunch will be served in the train
Kawane Honcho	13:10-16:00	Abt train & taxi	taxi and abt train, Enjoy beautiful countryside scenery, after sightseeing, taxi head to Sumatakyo Onsen area
Sumatakyo Onsen	16:00	taxi	Check in, dinner, overnight at traditional Onsen ryokan , overnight at a Japanese style room
Sumatakyo onsen	9:00-11:00	walking	Walking to Yume no Tsuribashi Suspension bridge and return to the ryokan
Sumatakyo Onsen	12:00	taxi	Taxi pick up and head to Senzu Station

Number of participants	Price/2 persons	Car Type
2 persons	50,000 JPY~/person	Sedan taxi

Included: Oigawa Railway 2 days free pass, Steam Locomotive express tickets, chartered taxi for day1, and day2, Bento lunch & tea in S.L, accommodation at a Japanese-style ryokan, dinner, breakfast, Non included: JR tickets, guide service (no need)

Steam Locomotive, abt train, & Farmer's house



City	Time	Transport	Place
Shizuoka	10:00	Train (JR & Oigawa)	From JR Shizuoka Station to Oigawa railway Shinkanaya Station
Kawane Honcho	11:52-13:09	Steam Locomotive	Steam Locomotive Trip to Senzu Bento lunch will be served in the train
Kawane Honcho	13:10	Private car	Car pick up. visit Chameikan (tea lecture), Shigo Suspension Bridge, arrive at the farmers house, tea farm visiting, harvest, cooking dinner or B.B.Q with the farmer, overnight
Kawane Honcho	9:12-10:17	Abt train	After breakfast, from Senzu, take abt train head to Okuoi kojo station
Kawane Honcho	10:20-11:20	walk	Stay at Okuoi Kojo Station area
Kawane Honcho	11:20-11:50	Private car	The farmer will pick up guests, transportation to Senzu Station

Number	Price/person	Sat, Sun, holiday
Minimum 2 people	27,000 JPY	28,000 JPY

Included: Oigawa railway ticket, steam locomotive ticket, bento lunch & tea served on SL, farmers house stay, cooking dinner with the farmer, breakfast, abt train ticket, tea lecture, car pick up & drop off,

Steam Locomotive, Sumatakyo & Farmer's house



City	Time	Transport	Place
Shizuoka	10:00	Train (JR & Oigawa)	From JR Shizuoka Station to Oigawa railway Shinkanaya Station
Kawane Honcho	11:52-13:09	Steam Locomotive	Steam Locomotive Trip to Semzu Bento lunch will be served in the train
Kawane Honcho	13:10	Private car	Car pick up. visit Chameikan (tea lecture), Shigo Suspension Bridge, arrive at the farmers house, tea farm visiting, harvest, cooking dinner or B.B.Q with the farmer, overnight
Kawane Honcho	08:00-08:40	bus	After breakfast, from Senzu, take a bus to Sumatakyo Onsen luggage in coin locker
Kawane Honcho	08:40-11:10	walk	Enjoy trekking in Sumatakyo Onsen area Yume no Tsuribashi suspension bridge
Kawane Honcho	11:20-12:00	bus	Take a bus to Senzu Station, lunch by their own, 12:45 take Oigawa railway to Kanaya, arrive at Kanaya at 13:57

Number	Price/person	Sat, Sun, holiday
Minimum 2 people	27,000 JPY	28,000 JPY

Included: Oigawa railway ticket, steam locomotive ticket, bento lunch & tea served on SL, farmers house stay, cooking dinner with the farmer, breakfast, bus ticket, tea lecture, car pick up & drop off,

Steam Locomotive, Sumatakyo & Farmer's house



City	Time	Transport	Place
Shizuoka	10:00	Train (JR & Oigawa)	From JR Shizuoka Station to Oigawa railway Shinkanaya Station
Kawane Honcho	11:52-12:45	Steam Locomotive	Steam Locomotive Trip to Shimo-izumi Bento lunch will be served in the train
Kawane Honcho	12:50	Private car	Car pick up. visit Chameikan (tea lecture), Shiogo Suspension Bridge, arrive at the farmers house, tea farm visiting, harvest, cooking dinner or B.B.Q with the farmer, overnight at the farmers house
Kawane Honcho	09:00-09:20	Private car	After breakfast, check out, car transportation to Shimo-Izumi by the private car.
Kawane Honcho	09:52-10:42	Oigawa railway	Take Oigawa railway to Kanaya, arrive at kanaya, transfer to JR line

Number	Price/person	Sat, Sun, holiday
Minimum 2 people	22,000 JPY	23,000 JPY

Included: Oigawa railway ticket, steam locomotive ticket, bento lunch & tea served on SL, farmers house stay, cooking dinner with the farmer, breakfast, bus ticket, tea lecture, car pick up & drop off,

Guided Bike Tour to a Green tea farm



City	Time	Transport	Place
Shizuoka	13:00	Hybrid bikes (cross bikes)	Start from JR Shizuoka Station with English (French) speaking guide
Shizuoka	14:00-15:30		Green tea farm visiting, tea picking in April, tasting of several kinds of tea, lecture, chatting at the farmers 150 years traditional house
Shizuoka	15:30-17:00	Hybrid Bikes (cross bikes)	Go back to Shizuoka Station via Shizuoka Sengen Shrine, Shizuoka Sengen old shopping street or popular Matcha gelato shop
Shizuoka	17:00		Arrive at JR Shizuoka Station Bike tour finish

Number of participants	Price/person	Car Type
2-6 persons	15,000 JPY	Hybrid rental bikes 24 gears , helmets

Included: rental hybrid bike, helmet, bottle of mineral water, English or French speaking guide, tea experience,

Mt.Fuji View, Countryside Guided Bike Tour



City	Time	Transport	Place
Shizuoka	13:00	Hybrid bikes (cross bikes)	Start from JR Shizuoka Station with an English speaking guide
Shizuoka	13:30-15:40		Mochimune Beach, Mochimune Fish Port, Plantation Area, Go along Mariko River cycling road , Chojiya Restaurant (450 years old), Utsunoya Village, Meiji Tunnel
Shizuoka	15:40-17:00	Hybrid Bikes (cross bikes)	Go back to Shizuoka station via downtown Shizuoka, Sumpu Castle Park / Shizuoka Sengen Shrine
Shizuoka	17:00		Finish at JR Mochimune Station

Number of participants	Price/person	Car Type
2-6 persons	12,000 JPY	Hybrid rental bikes 24 gears , helmets

Included: rental hybrid bike, helmet, bottle of mineral water, English speaking guide,

Green tea farm & Wasabi farm visiting



City	Time	Transport	Place
Shizuoka	09:00	Regular taxi	Start from JR Shizuoka Station or your hotel with an English speaking guide
Shizuoka	09:30 11:00		Tea farm visiting, tasting of several kinds of tea, tea lecture
Shizuoka	12:00 14:00		Utogi (the birth place of wasabi) wasabi farm visiting, lunch at Utsurogi small restaurant
Shizuoka	15:00		Finish at JR Shizuoka Station or your hotel

Number of participants	Price/person	Car Type
2 persons	42,000 JPY	Sedan taxi
4 persons	27,000 JPY	

Included: chartered taxi, English/French speaking guide, all activities
 Not included : lunch fee

Let me introduce myself.



- Name: Hirokane ISHIKAKI (1967~)
- Birthplace: Shingu City, Wakayama prefecture, Japan
- Grown up in Shizuoka City, Japan
- Had lived in Kyoto, Osaka, Tokyo, Nagoya and Numazu (Izu area)
- Overseas travel experience: Korea, Taiwan, Hong Kong, China, Thailand, the Philippines, Palau, the Maldives, Australia, New Zealand, Guam, Saipan, Bali, Hawaii, Spain, Ireland, Scotland(scotch whisky), England, the Marshall Islands,(scuba diving) Germany (for ITB Berlin), France

After graduating from Kyoto Sangyo University, I worked at Japan Finance Corporation for 20 years in six different locations. I like all the places where I lived. On the other hand, by leaving Shizuoka for 24 years, I noticed how Shizuoka is a wonderful place: Mt.Fuji, blue ocean, delicious sea food, green tea, warm hearted people. I started thinking that I would like to welcome more and more travelers to Shizuoka from all over the world. That's why I started this business.

I am looking forward to cooperate with you.

We are a small and young company but can take speedy action.

Of course, I can arrange also mega cities. Please feel free to ask me anything.

Thank you.

Hirokane ISHIKAKI

Local Travel Partners, Inc. www.shizuoka-tour.com

localtravelpartners@gmail.com

Provided Itineraries (1)

Day 1 (Guided Bike Tour, high-end hotel)

13:00 Arrive at JR Shizuoka Station from Tokyo or Osaka.

13:20-17:20 Guided Bike Tour to a green tea farm (English)

17:30-18:00 move by a chartered taxi (an English speaking driver) to Nippondaira Hotel

19:00 Dinner and overnight at Nippondaira Hotel (superior twin room, Mt.Fuji view)

Day2 (Sightseeing, the most popular spots in Shizuoka and Mt.Fuji area, high-end hotel)

9:00 (Visit by hotel's shuttle service) Nihondaira Plateau, Yume Terrace new observatory, take a Nihondaira ropeway (round trip), Kunozan Toshogu Shrine, back to the hotel

10:30 Pick up by a chartered taxi (English speaking driver)

Visit Fujinomiya Area (Lake Tanuki, Shiraito Falls, Fujisan Hongu Sengen Shrine, Mt.Fuji World Heritage Center)

19:00 Dinner and overnight at Nippondaira Hotel

Day3 (Sightseeing around Shizuoka area, Japanese culture)

9:00 check out and pick up by a chartered taxi (English speaking driver) visit Shizuoka Area (Tokaido Hiroshige Museum of Art, Miho pine Tree Grove, Miho Beach, drop off at Fugetsuro (a traditional Japanese restaurant with beautiful Japanese garden, (the last Tokugawa Shogun's residence) Japanese Kaiseki Lunch), very close to JR Shizuoka Station

By walk, 14:00 JR Shizuoka Station, head to next destination

We can arrange this itinerary in very short time.

Provided Itineraries (2)

Day 1 (450 years Japanese traditional restaurant, the most popular spots in Shizuoka, high-end hotel)

12:30 Arrive at JR Shizuoka Station from Tokyo or Osaka.

Chartered taxi with an English speaking driver

13:00-14:30 Chojiya Restaurant (450 years traditional restaurant which was drawn by a famous ukiyo-e (✂Japanese woodblock prints) artist Hiroshige UTAGAWA.

15:00 Nippondaira Hotel check in

15:30-17:30 On foot or by hotel's shuttle service, Nihondaira Plateau, Yume Terrace new observatory, take a Nihondaira ropeway (round trip), Kunozan Toshogu Shrine, back to the hotel

19:00 Dinner and overnight at Nippondaira Hotel (superior twin room, Mt.Fuji view)

Day2 (Miho Pine Tree Grove= Miho Beach, Steam Locomotive, A station on a lake, Stay at a very local Sumatakyo Onsen hotel)

8:30 check out and pick up by a chartered taxi (English speaking driver) visit Miho Pine Tree Grove, Miho Beach,

10:30 JR Shizuoka Station drop off, take JR train ~ Oigawa Railway (include a Steam Locomotive for 1 hour, Bento Lunch will be served on S.L)

13:10 arrive at Senzu Station, chartered taxi ~ take an abt system pretty small train for 40 minutes, (Okuoi Kojo Station, Nagashima Dam, very scenic places, emerald green lake) taxi pick up ~ head to Sumatakyo Onsen area

16:30 Suikoen Hotel check in (Japanese traditional ryokan)

18:30 Dinner and overnight at special room

Day3 (Walking in the morning, Very Scenic Suspencion Bridge,)

8:30-11:30 After breakfast, walking to "Yume no Tsuribashi"suspencion bridge, 11:20 back to the hotel

11:30 chartered taxi head to Oigawa railway Senzu Station

12:40 From Senzu Station to Kanaya Station by Oigawa Railway

14:50 Arrive at JR Shizuoka Station, head to next destination

We can arrange this itinerary in very short time.

Provided Itineraries (3) Summer

Day 1 (Stay at Hotel Century Shizuoka or Hotel Garden Square Shizuoka, both in front of JR Shizuoka Station)

17:00 Arrive at JR Shizuoka Station, check in the hotel

18:00 Meet with the operator (us) at the hotel, explanation of tomorrow's itinerary, take guests to Shizuoka Local Foods Izakaya (An operator leaves and Guests enjoy meal) by themselves

Day2 (Rafting & B.B.Q at Fujikawa River)

07:15 After breakfast, check out (suitcases transport)

7:40 JR Shizuoka Station take Tokaido Line

8:15 Arrive Fujikawa Station, car pick up by the rafting operator

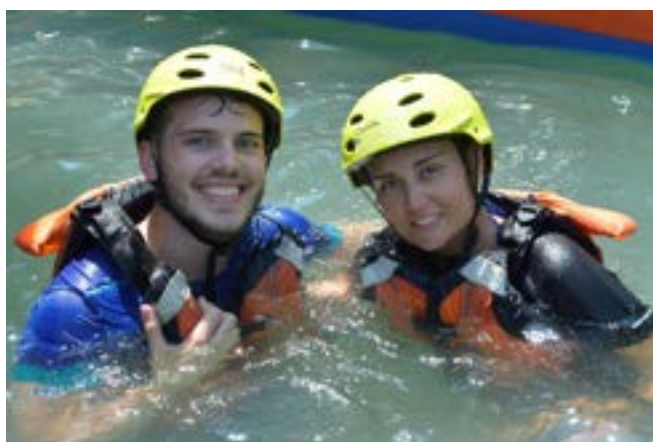
8:30-12:30 Rafting at Fujikawa River

12:30-15:00 B.B.Q at rafting shop

15:15 depart rafting shop by their car

15:25 arrive JR Fujikawa Station, finish

Head to next destination



Provided Itineraries (4)

Day 1 (Steam Locomotive & Farmers House Stay)

10:00 Arrive at JR Shizuoka Station, meet with the operator(us), hand over Oigawa railway Tickets, explanation

JR train ~ Oigawa Railway, Steam Locomotive ~ 12:45 arrive Shimoizumi Station, Car pick up by the farmer, lunch at local restaurant, tea farm visiting, harvest, cooking dinner (or B.B.Q) with the farmer, overnight at Japanese tatami room

Day2 (Tuna Freezing Factory)

9:20 depart the farmers, take Oigawa railway, transfer to JR line, arrive at JR Shimizu Station

11:30 JR Shimizu Station, meet with an English speaking guide

Visit Tuna Freezing Factory (enter the minus 60 celsius freezing room), → Shimizu Fish Market “Kashi no ichi” , lunch at a Sushi restaurant → S-pulse Dream Plaza (shopping), take a water bus → arrive Miho Port, car pick up by the hotel, 17:00 arrive at Hagoromo Hotel (a small traditional hotel in front of Miho Beach (A Part of Mt.Fuji World Heritage) dinner and overnight at Hagoromo Hotel

Day3 (Miho Beach, Japanese culture Ukiyo-e, Local Fishermans Town Stay)

After breakfast, strolling of Miho Beach

10:00 check out and pick up by a chartered taxi (English speaking driver) visit Satta Toge Pass (view spot of Mt.Fuji that drawn by a famous ukiyo-e artist Hiroshige Utagawa), Tokaido Hiroshige Museum of Art (Guests can make a piece of ukiyo-e), head to JR Shizuoka Station, chartered taxi finish.

Take JR train to Mochimune (7 minutes).

At Mochimune Station, Tuku Tuku Car will be waiting for the guests.

Driving seaside of Mochimune. Free time,

Stay at Nihoniro, Japanese traditional house

Dinner at local izakaya in Mochimune . Overnight at traditional Japanese house (1 house for 1 guest)

Day4 (Seaside, Local Fish Port)

breakfast cooked by local mother in Mochimune.

Strolling Mochimune Fish Port, Cycling along the beach, etc.

Check out , Car transport to Mochimune Station by the accommodation

The best Tokyo guided tour 7hrs

Use public transportation

9:00 Meet with our English speaking guide at your hotel

Visit:

Tsukiji Outer Market (the most popular sightseeing spot in Tokyo)

Asakusa area (traditional area that has been developed with the oldest temple in Tokyo called Senso-ji temple
Nakamise shopping alley, five storied pagoda, lunch at the restaurant (sushi, ramen, tempura, sukiyaki, okonomiyaki, etc)

Rental kimono service is available (need reservation)

Shibuya (modern area) famous for the ground crossing, a statue of a faithful dog named Hachi,

Harajuku, Omotesando area (modern area) buzzing harajuku is renowned for its colorful art and fashion scene, Takeshita Street, Kiddy Land, Oriental bazaar

16:00 finish the tour at JR Harajuku Station. A guide gives a detailed information how to return to your hotel.

“kimono rental fee” standard plan about 4,500 JPY to 5,000 JPY in total with hair-set. It depends on the shops.

The price : 33,000 JPY / a group

(included: guide’s lunch and drink fee, guide’s transportation fee, hotel pick-up fee)

(not included : your transportation fee, your lunch fee)

Above is a model plan. We can arrange other destinations.

Local Travel Partners, Inc. www.shizuoka-tour.com

localtravelpartners@gmail.com

The best Kamakura guided tour 6 hrs Use public transportation

This is an ideal tour for tourists who want to enjoy walking through the greenery mountain path with visiting 6 popular spots.

9:30 Meet with our guide at JR Kita-Kamakura Station

Hiking trail itself is about 5 km distance

Visit:

Jochiji temple, the fifth rank of the Five great Zen temples in Kamakura.

Kuzuharagaoka Shrine, People come here to pray a good match.

Zeniarai Benten (official name is Ugatsu shrine)

Zeniarai means Money Wash. It is said if you wash money with holy spring water, your money will be back to you more than double value.

Sasuke Inari Shrine,

Inari is a god of rice, protecting rice field and giving the farmers an abundant harvest every year. Many statues of fox and red Torii (shrine gate).

Coffee break at a pleasant café on the trail

The statue of Great Buddha

A national treasure,. Built in 1252. You can enter inside of the statue.

Late lunch at Hase dera temple area

15:30 Finish the tour at JR Kamakura Station. If you wish, the guide will introduce you to a “Komachi street”, attractive shopping street near the station.

The price: 33,000 JPY/ a group

(included: guide lunch fee, guide’s transportation fee,